

# CRAFT & FOLK ART MUSEUM

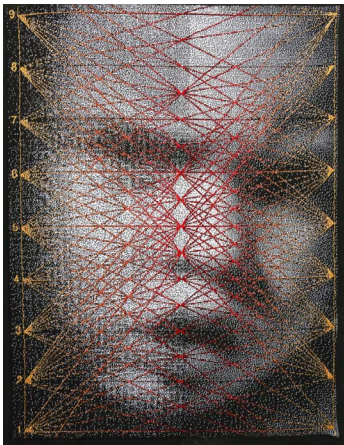
FOR IMMEDIATE RELEASE  
JULY 2014

**Contact:**

Sasha Ali | Exhibitions Manager  
sasha@cafam.org | 323.937.4230 x25



*Bystander*, June Lee,  
mixed media, 2011-2014.  
Photo: Studio Myung



*Intensity Su-Data*, Lia Cook,  
cotton and rayon, 2013.  
Courtesy of the artist

## NEW DIRECTIONS: A JURIED EXHIBITION OF CONTEMPORARY TEXTILES

September 14, 2014 – January 4, 2015

### JURIED EXHIBITION PUSHES THE ENVELOPE WITH INNOVATIVE SHIFTS IN CONTEMPORARY TEXTILE ART

LOS ANGELES—The Craft & Folk Art Museum presents *New Directions: A Juried Exhibition of Contemporary Textiles*, featuring technical, aesthetic, and structural innovations in textile art. Organized by the Textile Society of America (TSA), the exhibition opening coincides with TSA's symposium, "New Directions: Examining the Past, Creating the Future," taking place at UCLA from September 10 – 14. The jury panel selected 19 established and emerging artists whose work reflects the shifts and future movements in textile art. The exhibition has been organized by TSA Board Members Eulanda Sanders, Phd.; Donna R. Danielson, Professor in Textiles and Clothing at Iowa State University; and Gerry Craig, Associate Professor/Department Head at Kansas State University. It opens on September 14 and runs through January 4, 2015.

"We are proud to partner with the Textile Society of America, an esteemed group of scholars and artists who are engaged in important academic research and are supporting the cutting edge of new technology, processes and materials in the field of fiber," says CAFAM Executive Director Suzanne Isken. "This juried show will demonstrate the enormous variety of contemporary artistic innovation."

The jury consisted of artists Gerhardt Knodel and Carol Shaw-Sutton, as well as Cooper-Hewitt National Design Museum deputy curatorial director Matilda McQuaide and TSA Executive Director Tali Weinberg. Among the selected artists is Los Angeles-based Guillermo Bert, whose QRC-encoded textiles integrate Chilean Mapuche weaving with encryption technology. Visitors are encouraged to de-code the design from his weaving "Lukutuwe (Fertility)" and enter a digital portal to Mapuche life and culture.

"Dead Hare" by Jenne Giles evokes the lifeless realism of taxidermy through the medium of felting. Renowned weaver Lia Cook's digital Jacquard loom weaving is superimposed with data visualization of neuroscientific readings from a viewer's emotional response to the work.

"Already, we consider the exhibition a success, increasing and diversifying our membership and furthering our mission to foster the exchange and dissemination of textile knowledge across disciplines," affirm curators Sanders and Craig. "Indeed, the artists in the exhibition represent this cross-disciplinary exchange and the reach for new directions."

The selected artists are: Whitney Artell, Guillermo Bert, Caroline Charuk, Lia Cook, Henia Eizenberg, Jenne Giles, Amy Gross, Ana Lisa Headstrom, Mariko Kusumoto, June Lee, Abbie Miller, Susan Moss, Linda Ohrn-McDaniel, Peggy Osterkamp, Meghan Price, Jennifer Reifsneider, Cynthia Schira, Pauline Verbeek Cowart, and Irene Walker.

The Textile Society of America (TSA) is a membership-led organization that provides an international forum for the exchange and dissemination of textile knowledge from artistic, cultural, economic, historic, political, social, and technical perspectives.

An opening reception for *New Directions: A Juried Exhibition of Contemporary Textiles* will take place on Saturday, September 13 from 6:00 – 9:00 p.m. A curator talk will take place from 6:00 – 6:30 p.m. in the gallery. The reception is open to the public for a \$12 admission fee. CAFAM members will be able to preview the exhibition on Saturday, September 13 starting at 12:00 p.m. A full slate of educational programs and workshops will accompany this exhibition.

*Supported in part by the Textile Society of America and The Antonia and Vladimir Kulaev Cultural Heritage Fund.*

## **TEXTILE SOCIETY** *of* **AMERICA**

---

Situated on historic Museum Row since 1973, the **Craft & Folk Art Museum** (CAFAM) is an invaluable contributor to Los Angeles culture, exhibiting current artists with intriguing perspectives and distinctive practices. Exploring the leading edge of craft, art, and design, CAFAM gives audience to diverse makers and artists whose work is often not represented in larger art institutions. The museum is a place to see art and make art — all under one roof. CAFAM coordinates a robust roster of hands-on workshops led by professional artists and makers. Uncommon discoveries are also guaranteed at the Craft & Folk Art Museum Shop, which offers an expertly curated array of handmade items from skilled artisans. The intimate, atypical museum space and independent spirit at CAFAM combine to create an atmosphere of excitement and innovation, where people in Los Angeles deepen their relationships to art, creativity and one another. For more information, visit [www.cafam.org](http://www.cafam.org).

Location: 5814 Wilshire Blvd., Los Angeles, CA 90036

Admission: FREE every Sunday

Regularly: \$7 for adults; \$5 for students, teachers, seniors, and veterans;  
FREE for CAFAM members

Hours: Tuesday-Friday, 11:00 a.m. to 5:00 p.m.;

Saturday & Sunday, 12:00 p.m. to 6:00 p.m.; closed Mondays.

Every first Thursday of the month, extended hours 6:30 - 9:30 p.m.